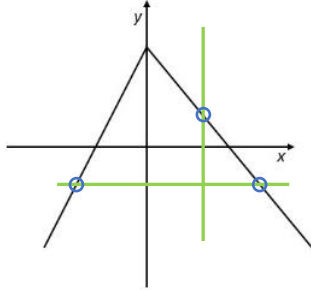


FUNCTIONS 2: QUIZ SOLUTIONS

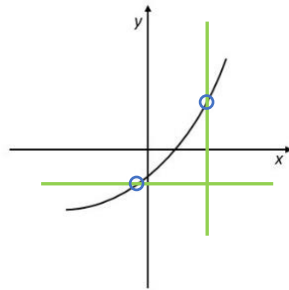
Use the vertical line test to determine if the given relation is a function. If it is a function, use the horizontal line test to classify it as a one-to-one function or a many-to-one function.

Question 1



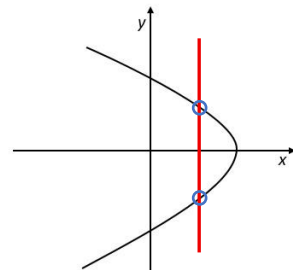
Function; many-to-one

Question 2



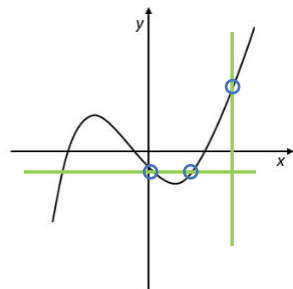
Function; one-to-one

Question 3



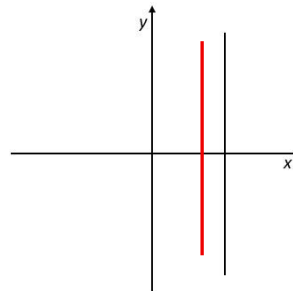
Not a function

Question 4



Function; many-to-one

Question 5



Not a function